

# MOTZFELDT

## Southern Greenland

One of the World's Largest Undeveloped  
Niobium-Tantalum-Rare Earth Deposits



## Disclaimer

This presentation is made on behalf of Stallion Resources Limited (“the Company”). This presentation does not constitute an admission document relating to the Company nor does it constitute or form part of any offer or invitation to purchase or subscribe for, or any solicitation of any such offer to purchase or subscribe for, any securities in the Company nor shall this presentation or any part of it, or the fact of its distribution form the basis of or be relied on in connection with, any contract therefor. No reliance may be placed by any person for any purpose whatsoever on the information or opinions contained in this presentation or on the completeness, accuracy or fairness thereof. No representation or warranty, express or implied, is given by or on behalf of the Company, its shareholders, directors, officers or employees or any other person as to the accuracy or completeness of the information or opinions contained in this presentation, and no liability is accepted for any such information or opinions (including in the case of negligence, but excluding any liability for fraud).

This presentation does not constitute a recommendation regarding any decision to sell or buy securities in the Company. If any person is in doubt as to the contents of this presentation, or wishes to obtain advice as to the investment merits of the Company’s securities, he should seek independent advice from a person who is an authorised financial services provider.

All statements (other than statements of historical fact) included within this presentation, including without limitation, the strategies, plans, expectations and objectives of the Company, and the markets and economies in which it operates, are forward-looking statements. A variety of factors could cause the actual results and expectation to differ materially from the anticipated results or other expectations expressed in the forward-looking statements. These statements are illustrative only and do not amount to any representation that they will be achieved as they involved risks and uncertainties and relate to events and depend upon circumstances which may or may not occur in the future and there can be no guarantee of future performance.

Without prejudice to the generality of the foregoing, forward-looking statements in this presentation may include (but are not limited to) reserve and resource estimates and targets and production rates which involve an assessment, based on certain estimates and assumptions, by the companies in which the Company has invested or the operators of projects in which the Company has invested (together “investee companies”). There are numerous uncertainties inherent in estimating quantities of reserves and resources and in projecting future rates and volumes of production and the timing and quantum of development expenditures. The total amount, rate or timing of actual future production may vary from reserve, resource and production estimates, projections and targets. Those forward-looking statements represent the internal projections, estimates or beliefs of those investee companies and their advisers and have not been independently verified by the Company.

This presentation is not for distribution in, nor does it constitute an offer of securities for sale in, any jurisdiction where such distribution or offer is unlawful. The distribution of this presentation in some jurisdictions may be restricted by law and persons into whose possession this document comes should inform themselves about and observe any such restrictions.



# MOTZFELDT SNAPSHOT: WORLD-CLASS POTENTIAL

## Multi-element Deposit Containing Critical Minerals

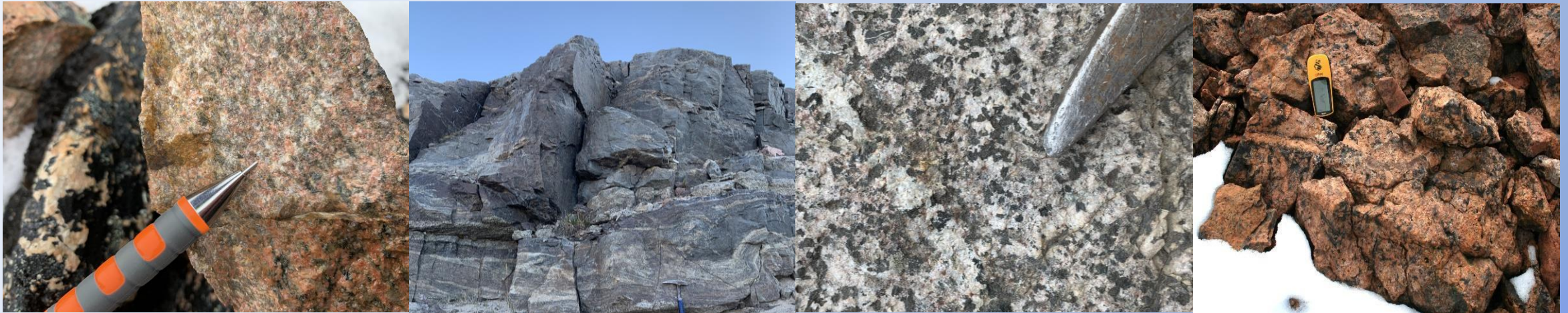
(Tantalum, Niobium, Zirconium and Rare Earths) which increases value and reduces commodity risk

## 340mt Total Inferred Mineral Resource (2012 Mineral Resource Statement)

Contained Metal Inventory of 1,564,000 t  $ZrO_2$  (@ 0.460%), 629,000 t  $Nb_2O_5$  (@ 0.185%), 41,000 t  $Ta_2O_5$  (@ 0.012%) and 884,000 t TREO (@ 0.260%)

**Infrastructure Advantages:** 10km to transport hub of Narsarsuaq (harbour and international airport)

Cost-sharing potential with Kvanefjeld and Kringlerne projects



# THE GARDAR PROVINCE OF SOUTHERN GREENLAND

**Kvanefjeld**  
(REE Deposits)

**Kvanefjeld**

**Motzfeldt**

**Motzfeldt**  
340mt Total Inferred  
Mineral Resource

**Amitsoq**  
(World class  
graphite grades)

**Amitsoq**

**Nanulaq**

**Nalunaq**  
(Gold Mine: 367.000 oz)

Nanortalik

Tasiusaq

Aappilattoq

Narsarsuaq

Narsaq

Qaqortoq

Eqalugaarsuit

Alluitsup Paa



# GREENLAND: A MINING-FRIENDLY COUNTRY

- 01 Autonomous country with self-rule since 1979, but also a constituent country within the Kingdom of Denmark.
- 02 Supportive authorities committed to resource extraction
- 03 Mining Code overseen by Mineral Licensing and Safety Authority (MLSA)
- 04 Established local mining economy: logistics, training, services
- 05 Advanced mining projects including rare earths, zinc-lead ilmenite, anorthosite, gold and rubies



*Narsarsuaq International Airport (only 10 km from the Motzfeldt Project)*

# HUGE SECTOR VALUATIONS IN NIOBIUM-TANTALUM-RARE EARTHS

Name	Commodity	Market Cap (USD)	Other assets
CBMM	Niobium	<b>Private</b>	N/A
CMOC	Niobium	<b>\$1.02 Billion (HK: 3993)</b>	Copper, Cobalt, Gold, Phosphate
Pilbara Minerals	Tantalum	<b>\$5.5 Billion (ASX:PLS)</b>	Lithium
NioCorp	Niobium	<b>\$225 Million (TSX:NB)</b>	Scandium, Titanium
Global Advanced Metals (GAM)	Tantalum	<b>Private</b>	N/A
Lynas Corporation	REEs	<b>\$5.8 Billion</b>	N/A

Parties	Asset	Purchase Price	Date
Anglo American (Seller) CMOC (Buyer)	All Anglo's Niobium and Phosphate Assets	<b>\$1.7 Billion</b>	Oct 2016
IAMGOLD (S) Magris Resources (B)	Niobec Niobium Mine	<b>\$530 Million</b>	Jan 2015

# MOTZFELDT: TARGETING STRATEGIC METALS

## Niobium ( $\text{Nb}_2\text{O}_5$ )

- Used for lightweight, resistant, super alloys
- Exceptional resistance
- Niobium-bearing steel used in many industries: Oil & gas pipelines, nuclear reactors, satellites, cars (\$9 worth of niobium reduces car weight by 100kg and improves fuel efficiency by 5%)
- Projected CAGR of 5.90% during 2019-2024 (Sources: Niobec and Mordor Intelligence)

## Tantalum ( $\text{Ta}_2\text{O}_5$ )

- Twice tensile strength of high-strength steels
- Electrical superconductor, critical component in electrical capacitors
- 60% produced in Rwanda/DRC
- US Dodd-Frank Act and EU conflict minerals laws strengthen non-conflict mineral countries as sources of Tantalum
- Roskill: Tantalum demand to grow at 4-5% pa to 2028

## Zirconium ( $\text{ZrO}_2$ )

- Very strong and malleable metal
- Lighter than steel, extremely resistant to heat and corrosion
- Nuclear reactors (90% of demand), component in abrasives and hardening agent in alloys, especially steel.
- USA and Australia account for 67% of worldwide production

## Rare Earths

- Uses: Electronic devices inc. computers, batteries, mobile phones, lighting and many renewable energy producers
- EU and USA have designated Niobium, Tantalum and Rare Earths as Critical Minerals which are critical to their economies and where supply may be constrained due to various factors including geopolitics



# HIGH-VALUE RARE EARTHS

## 18% of Aries Resource

of 884,000t TREO comprised of high-value Neodymium, Praseodymium and Dysprosium

## Neodymium/Praseodymium/ Dysprosium

Used in high-intensity permanent magnets for electric cars and wind turbines  
~ 2t of REEs in a large turbine

## Neodymium demand

expected to show greatest increase in demand due to use in rapidly growing EV market (*Roskill*)



### TREO Basket Distribution

La203	0.24	Sm203	0.02
Ce203	0.39	GD203	0.02
PR203	0.04	TB203	0.00
Nd203	0.12	DY203	0.02
SM203	0.02	Y203	0.12



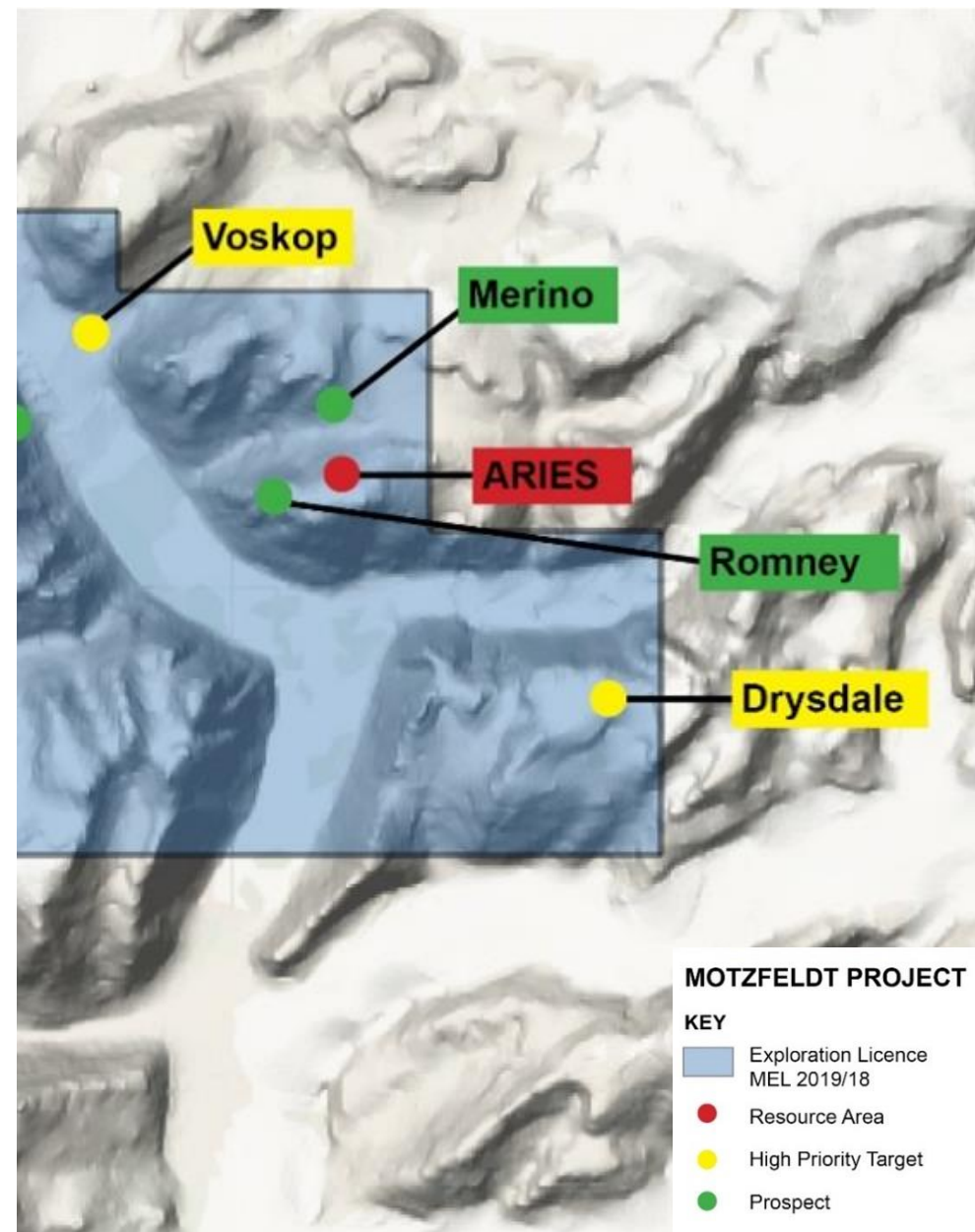
# MULTIPLE EXPLORATION TARGETS

## Voskop: High-grade zone (>1.2km)

- High TREO results with some samples at ~1% TREO (av. 0.42% TREO)
- HREOs & Yttrium Oxide comprise ~18.8% of TREO
- ~0.2% Niobium, Tantalum 0.045%
- High Zirconium grades with some samples >2% ZrO<sub>2</sub> (av. 0.87%)

## Drysdale: High-grade zone (>1.4 km)

- High TREO results with some samples at ~1% TREO (average 0.28% TREO)
- HREOs & Yttrium Oxide comprise ~16.8% of TREO
- Niobium 1.7%, Tantalum 0.08%, Zirconium 3.17%

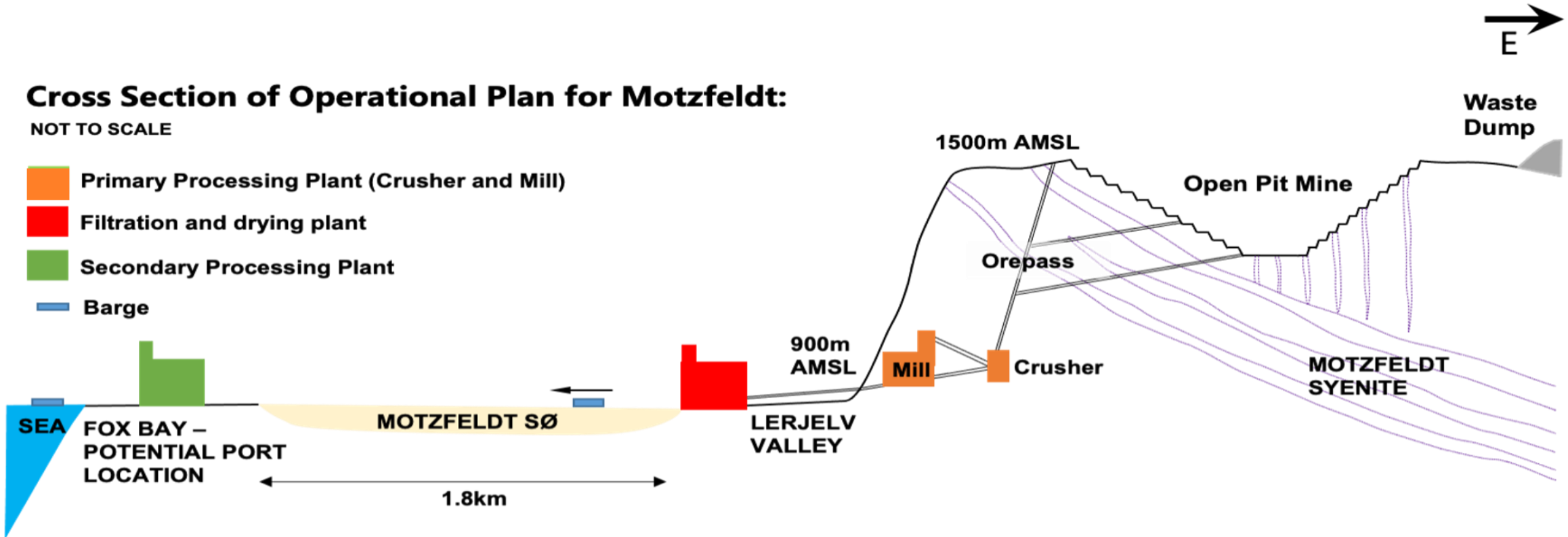


# MINING & PROCESSING PLAN

## Cross Section of Operational Plan for Motzfeldt:

NOT TO SCALE

- Primary Processing Plant (Crusher and Mill)
- Filtration and drying plant
- Secondary Processing Plant
- Barge



## Simplified Processing Flow Sheet





# TRANSPORT LOGISTICS



*Aries Transport Routes (Elevation, Inset Aerial View)*

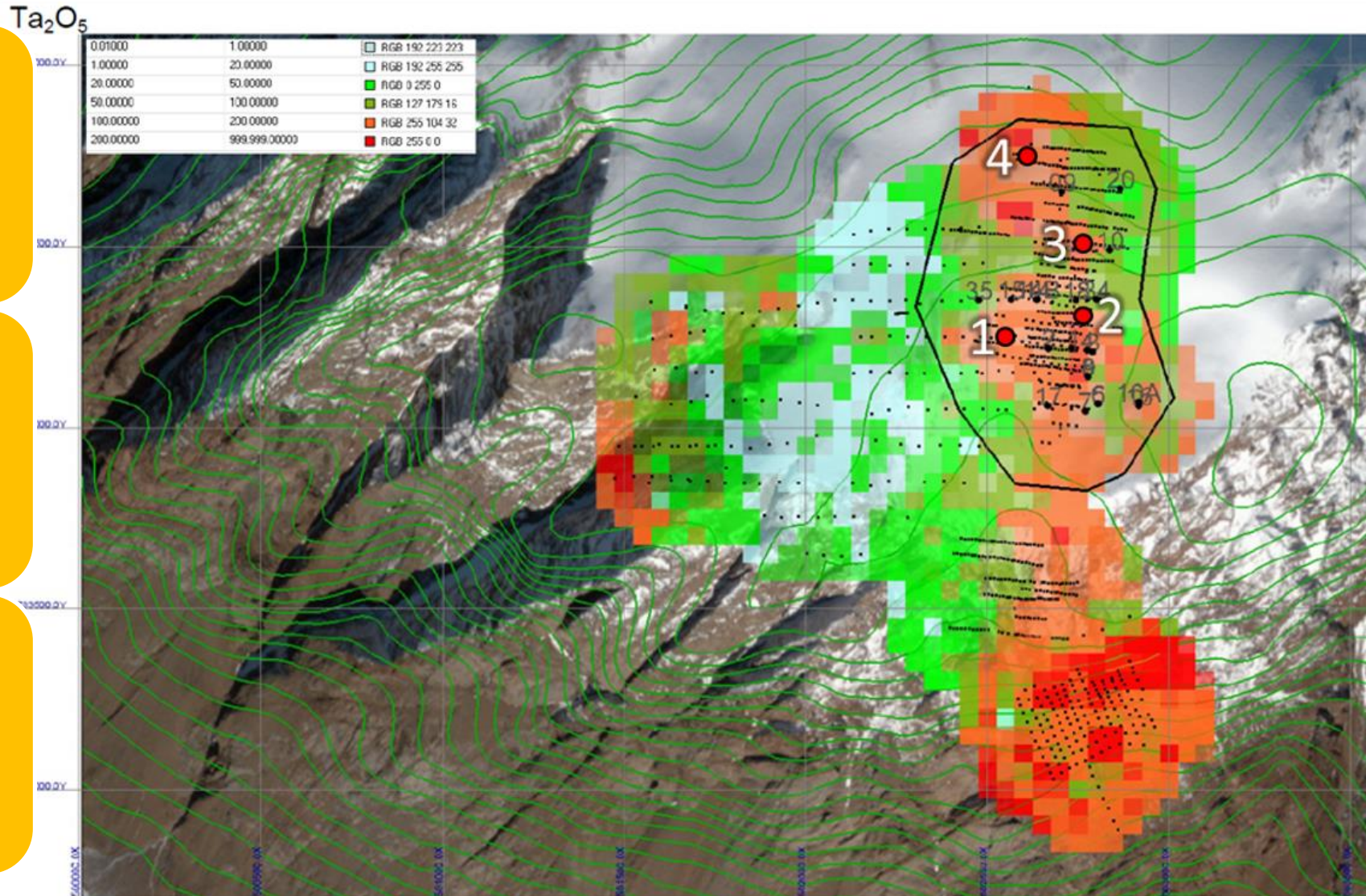


# FIELD WORK: ARIES BULK SAMPLING

Bulk Sampling Completed of Aries Deposit

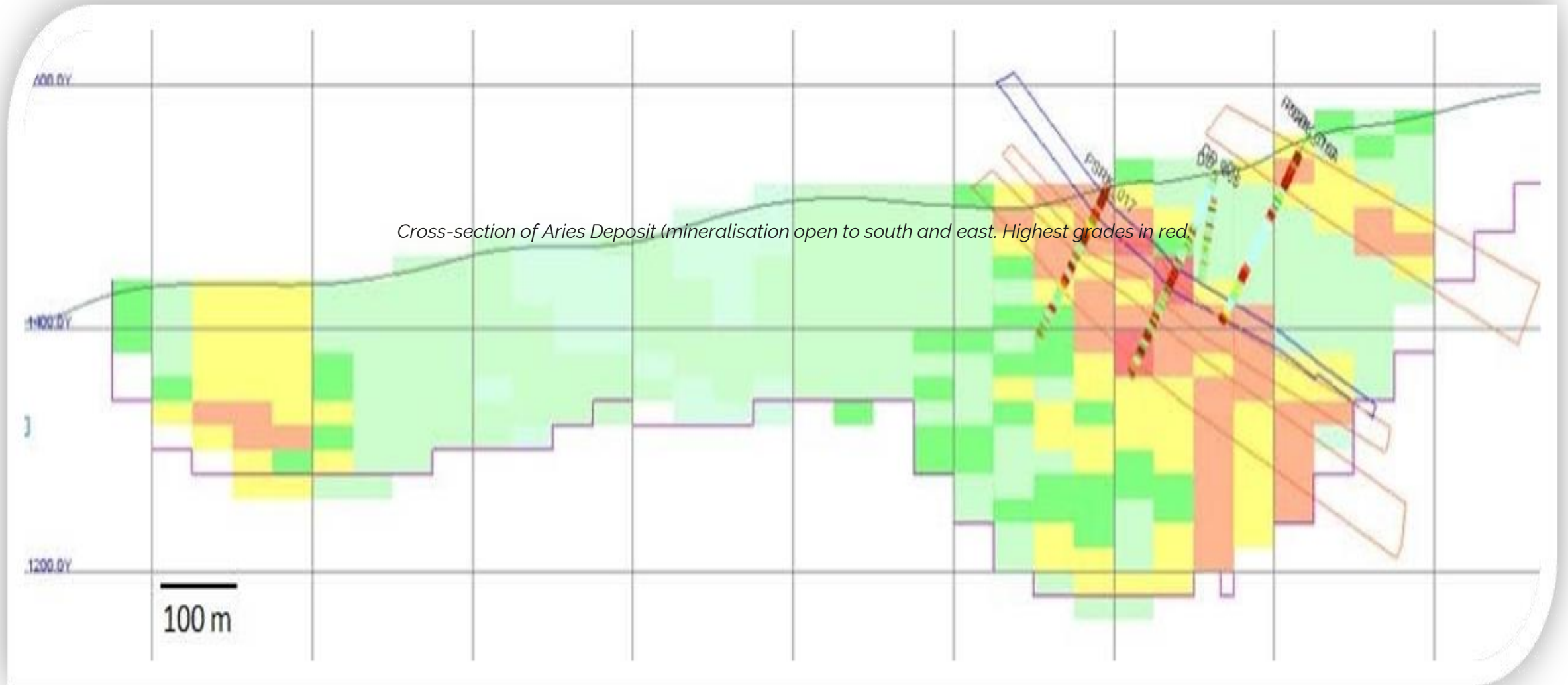
Bulk samples labelled 1-4 within Aries JORC Resource area (black polygon)

Modelled Ta<sub>2</sub>O<sub>5</sub> grades shown right (orange-reds higher grades)





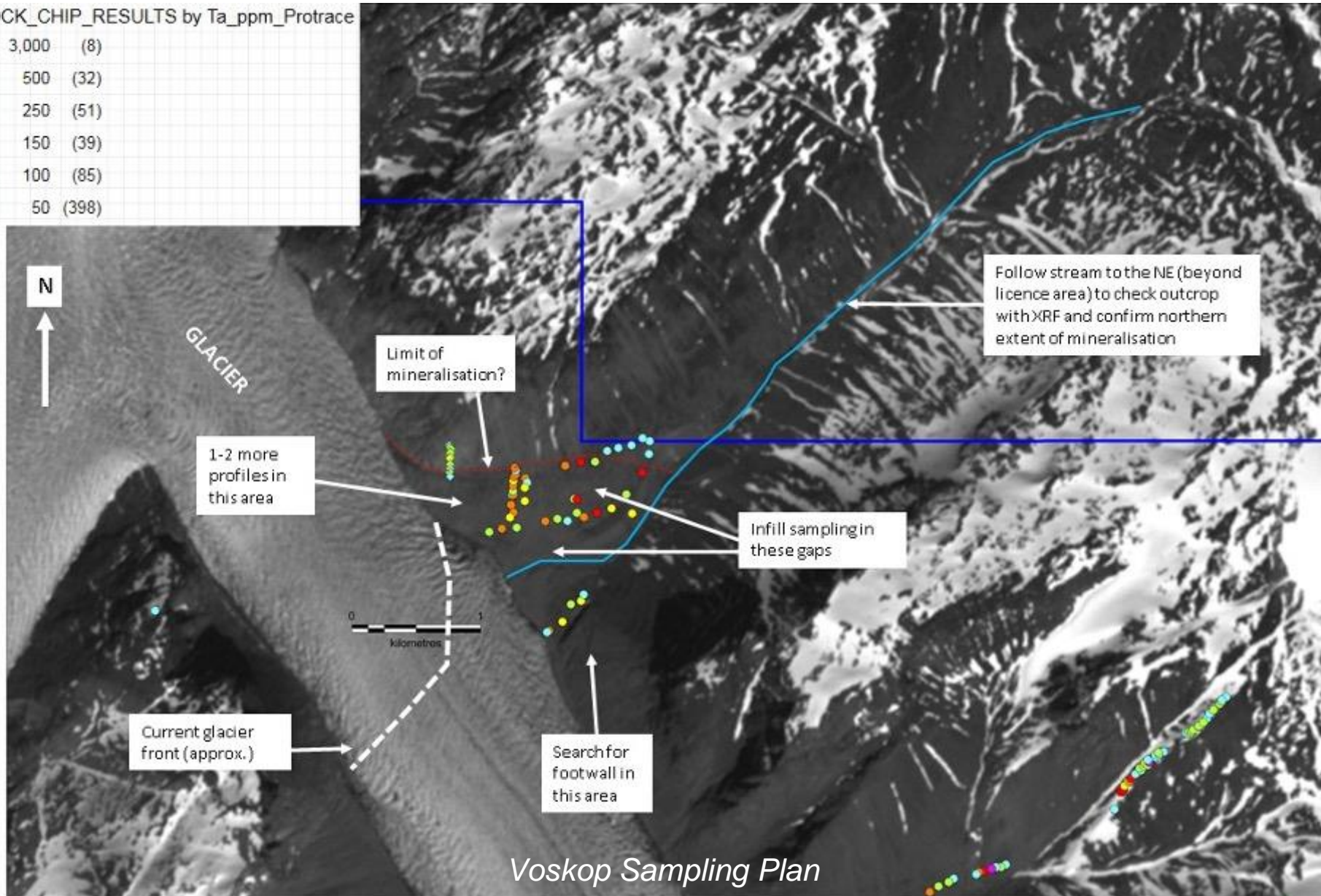
# SIGNIFICANT UPSIDE POTENTIAL AT ARIES DEPOSIT



# VOSKOP SAMPLING

ALL\_2011\_ROCK\_CHIP\_RESULTS by Ta\_ppm\_Protrace

500 to 3,000	(8)
250 to 500	(32)
150 to 250	(51)
100 to 150	(39)
50 to 100	(85)
0 to 50	(398)



*Voskop Sampling Plan*



# VOSKOP SAMPLING

Selected results from 2019 Sampling Programme at Voskop Target highlighting Dysprosium (Dy), Neodymium (Nd) and Praseodymium (Pr) Rare Earths and Niobium (Nb), Tantalum (Ta) and Zirconium (Zr)

SAMPLE No.	Dy ppm	Nb ppm	Nd ppm	Pr ppm	Ta ppm	Zr ppm
14417	135	2070	1055	362	87.7	>10000
14418	131.5	>2500	1220	421	116.5	>10000
14419	106	>2500	1120	381	123.5	>10000
14422	171	>2500	1020	348	159.5	>10000
14479	137	2490	1130	382	107	>10000
14482	94.7	>2500	1010	345	92	>10000
14483	121	1995	1045	350	102	>10000
14485	150	>2500	1125	373	119.5	>10000
14511	297	>2500	1910	505	291	>10000



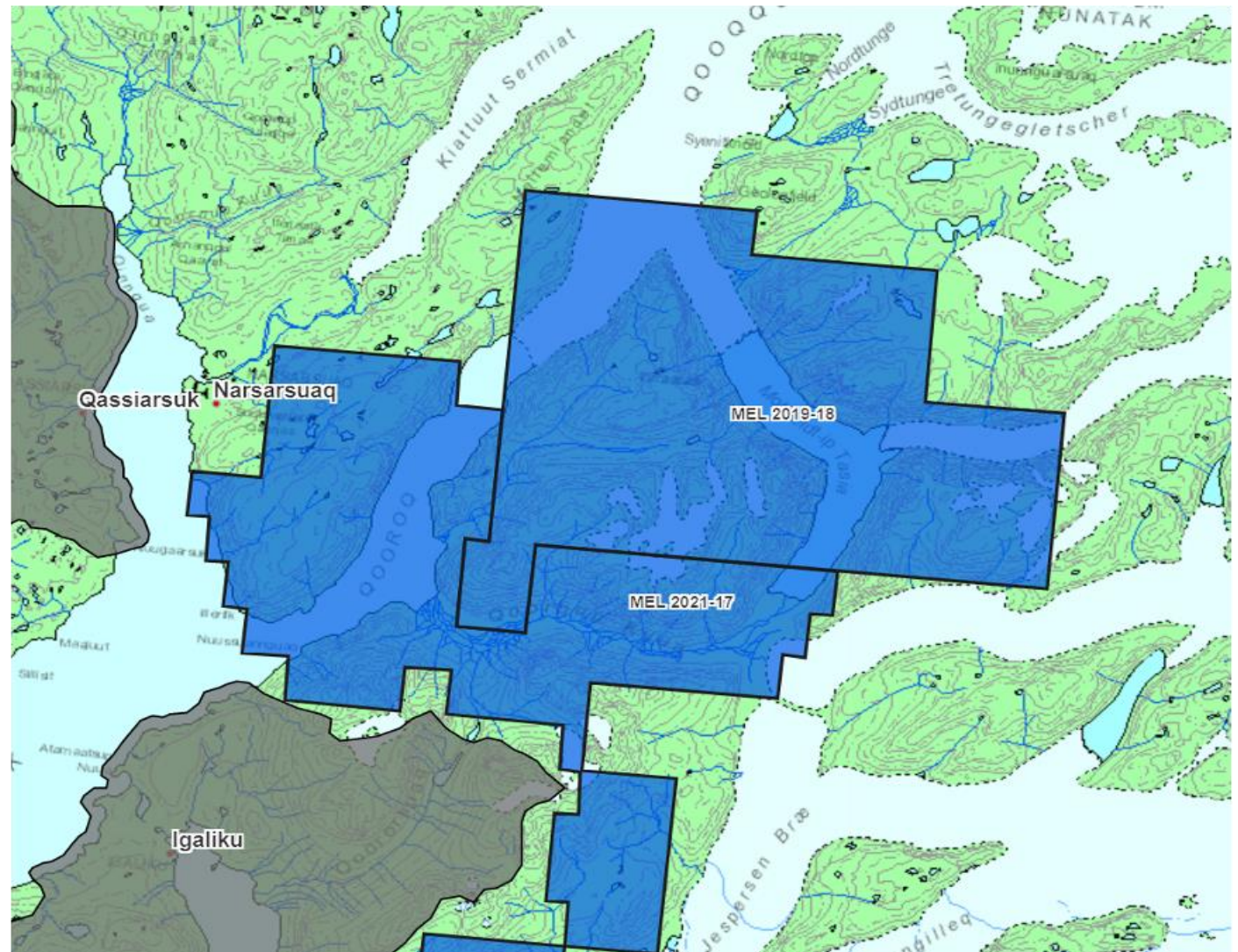


# MOTZFELDT PLACER POTENTIAL

New exploration licence 2021-17 taken out, targeting shallow placer potential

The Main Valley and Motzfeldt Lake define a 35 km long "channelway" through which sediments from the area, tributary valleys and glaciers are being pushed through

Programme planned for this year to sample 4 traps where there is significant potential for heavy mineral accumulations





# MOTZFELDT PLACER POTENTIAL

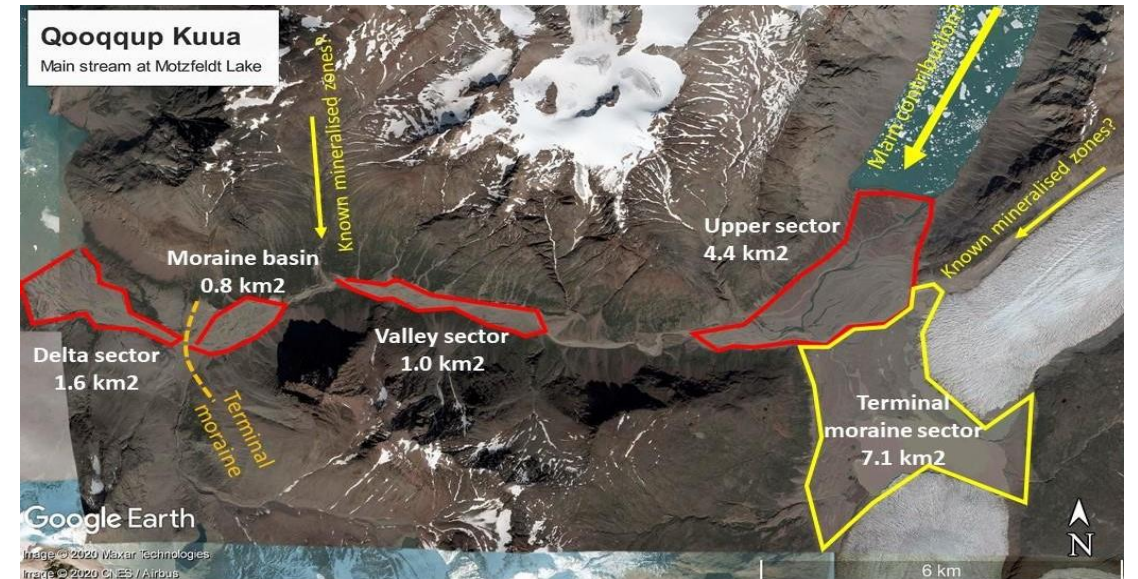
Recent glacial erosion of the glaciofluvial deposits could have exposed lower sediment horizons, exposing potential placer mineralisation

Target minerals will be fine grained with higher density than the host sediments

Objective of field exploration will be to define areas where the lower sediment layers are exposed



The channel (shown in red) for sediment transport through the Motzfeldt Centre, with important sediment contributions from tributary valleys and glaciers



The overall placer targets in the Main Valley which cover a total area of 7.8km<sup>2</sup>

# CURRENT AND FORTHCOMING WORK PROGRAMME

## Rare Earth Department Study

Determining the distribution of each rare earth metal between the many mineral phases present (the “deportment”).

Estimate the relative proportions of the minerals present.

A deportment study is a necessary precursor to the design of any metallurgical programme to determine the optimal processing and extraction processes for Nb-Ta-Zr and Rare Earths.

## 2022 Field Programme

Drilling Voskop Target focusing on higher-grade Rare Earth zones

Environmental Baseline Studies as first step in EIA work and application for mining licence

Field exploration of licence area 2021-17 focusing on placer Ta-Nb potential

## Metallurgical Testwork Programme

To determine the optimal processing routes to maximise profitability

## Scoping Study

PEA/Scoping study to update process routes, infrastructure and revenue potential



# Contacts



**Email:** [info@stallionresources.com](mailto:info@stallionresources.com)  
**Telephone:** +44 (0)203 950 0725  
**Website:** [www.stallionresources.com](http://www.stallionresources.com)